

# THE

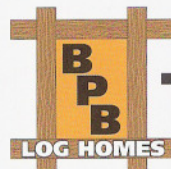
# MILLBORO

(LOFT SERIES)



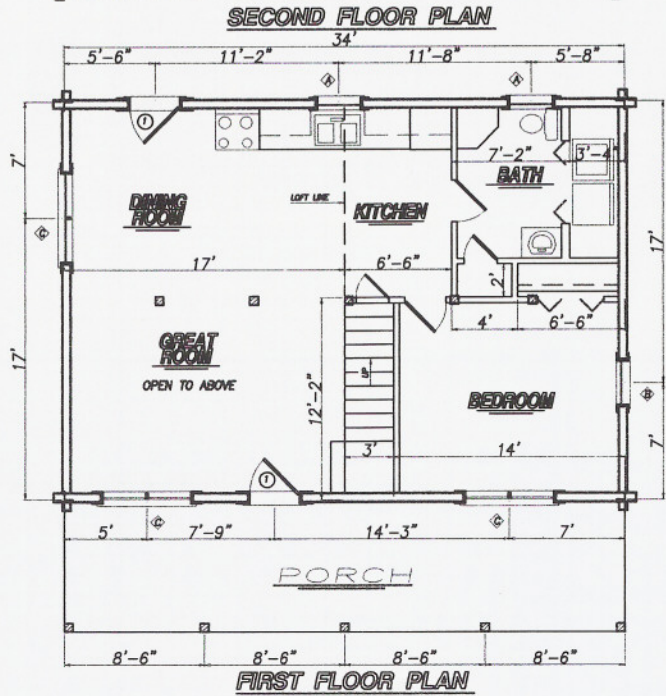
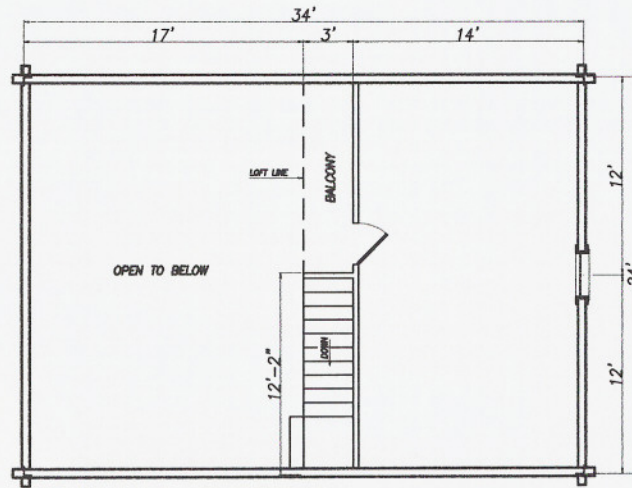
## THE MILLBORO LOG HOME PACKAGE INCLUDES:

- **LOG WALL SYSTEM (Borate Pressure Treated)**
  - Pre-cut, pre-drilled, wall logs
  - 12" spikes and saturated foam gasket
  - 1/2" log wall rods with springs
  - Assembly prints
  - Base board trim and log siding for subfloor band boards
- **WINDOW & DOOR FRAMING SYSTEM (Borate Pressure Treated)**
  - Pre-cut, window and door jambs
  - Interior and exterior 1" trim lumber
- **LOFT FRAMING SYSTEM (Borate Pressure Treated)**
  - Pre-cut 4" x 8" loft joists
  - Pre-cut 6" x 12" girder beams
  - 6" x 6" support posts with adjusters
  - Installation hardware
- **ROOF FRAMING SYSTEM (Borate Pressure Treated)**
  - Pre-cut 4" X 8" rafters and ridge beams
  - 4" x 8" support posts and 2" x 6" rafter collar ties
  - Pre-cut 4" x 8" dormer headers, sills, and support posts
- **PORCH FRAMING SYSTEM (Pressure Treated)**
  - Pre-cut 4" X 8" sills, plates and rafters
  - 6" x 6" foundation and support posts
  - Pre-cut 2" x 8" joists and 5/4" decking
- **TRIM LUMBER (Borate Pressure Treated)**
  - Surfaced trim lumber for gable ends, facia, and porch eaves
- **OPTIONS:** 2" x 6" T & G, Rigid insulation and log siding for gable ends and dormers



**THE RIGHT CHOICE.**

*Borate Pressure Treatment*  
**THE UNSEEN INVESTMENT.**



# THE MILLBORO

- 24' x 34'
- 1224 Square Feet Living Area
- 816 Sq. Ft. First Floor, 408 Sq. Ft. Second Floor
- 8' x 34' Front Porch



*Borate Pressure Treatment*  
**THE UNSEEN INVESTMENT.**

**THE BURKE-PARSONS-BOWLBY CORPORATION**

P.O. Box 609 • Stanton, Kentucky 40380 • (606) 663-2837 • FAX: (606) 663-4136  
 P.O. Box 231 • Ripley, West Virginia 25271 • (304) 372-1243 • FAX: (304) 372-1211