

THE

LAKEVIEW

(LOFT SERIES)



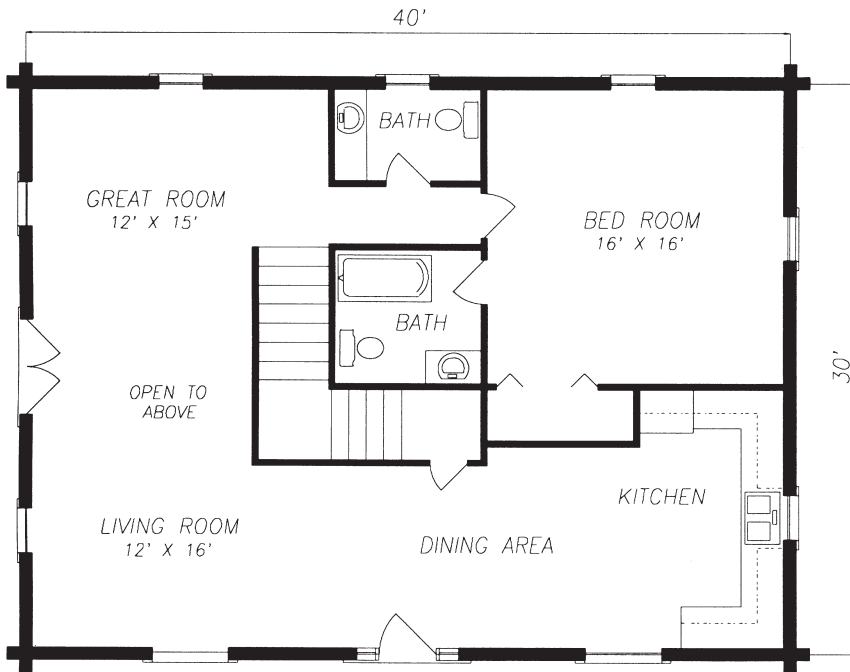
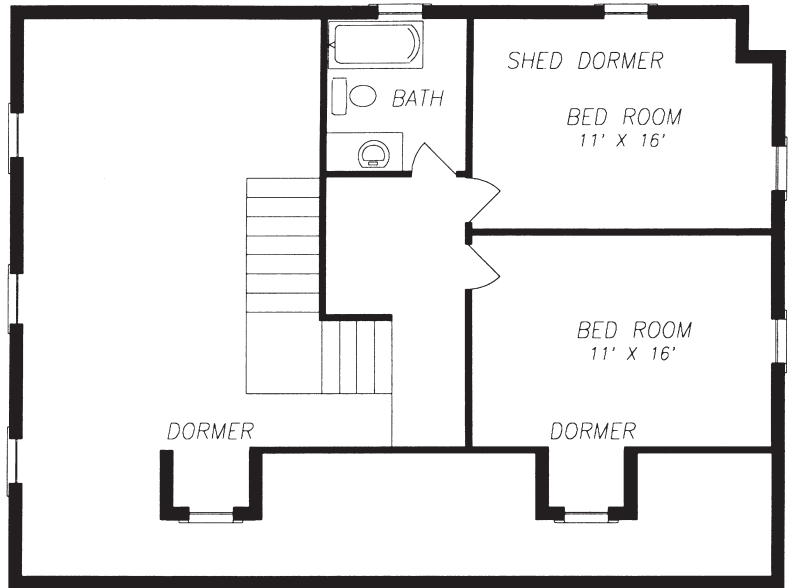
THE LAKEVIEW LOG HOME PACKAGE INCLUDES:

- **LOG WALL SYSTEM (Borate Pressure Treated)**
 - Pre-cut wall logs
 - 12" lags and saturated foam gasket
 - 1/2" log wall rods with springs
 - Assembly prints
 - Base board trim and log siding for subfloor band boards
- **WINDOW & DOOR FRAMING SYSTEM (Borate Pressure Treated)**
 - Pre-cut, window and door jambs
 - Interior and exterior 1" trim lumber
- **LOFT FRAMING SYSTEM (Borate Pressure Treated)**
 - Pre-cut 4" x 8" loft joists
 - Pre-cut 6" x 12" girder beams
 - 6" x 6" support posts with adjusters
 - Installation hardware
- **ROOF FRAMING SYSTEM (Borate Pressure Treated)**
 - Pre-cut 4" X 8" rafters and ridge beams
 - 4" x 8" support posts and 2" x 6" rafter collar ties
 - Pre-cut 4" x 8" dormer headers, sills, and support posts
- **PORCH FRAMING SYSTEM (Pressure Treated)**
 - Pre-cut 4" X 8" sills, plates and rafters
 - 6" x 6" foundation and support posts
 - Pre-cut 2" x 8" joists and 5/4" decking
- **TRIM LUMBER (Borate Pressure Treated)**
 - Surfaced trim lumber for gable ends, dormers, facia, and porch eaves
- **OPTIONS: 2" x 6" T & G, Rigid insulation and log siding for gable ends and dormers**



THE RIGHT CHOICE.

Borate Pressure Treatment
THE UNSEEN INVESTMENT.



THE LAKEVIEW

- 30' x 40'
- 1920 Square Feet Living Area
- 1200 Square Feet First Floor / 720 Second Floor
- 8' x 40' Covered Porch
- 8' X 38' Deck



Borate Pressure Treatment
THE UNSEEN INVESTMENT.

THE BURKE-PARSONS-BOWLBY CORPORATION

P.O. Box 609 • Stanton, Kentucky 40380 • (606) 663-2837 • FAX: (606) 663-4136
P.O. Box 231 • Ripley, West Virginia 25271 • (304) 372-1243 • FAX: (304) 372-1211