

# THE

# HOMESTEAD

(RANCH SERIES)



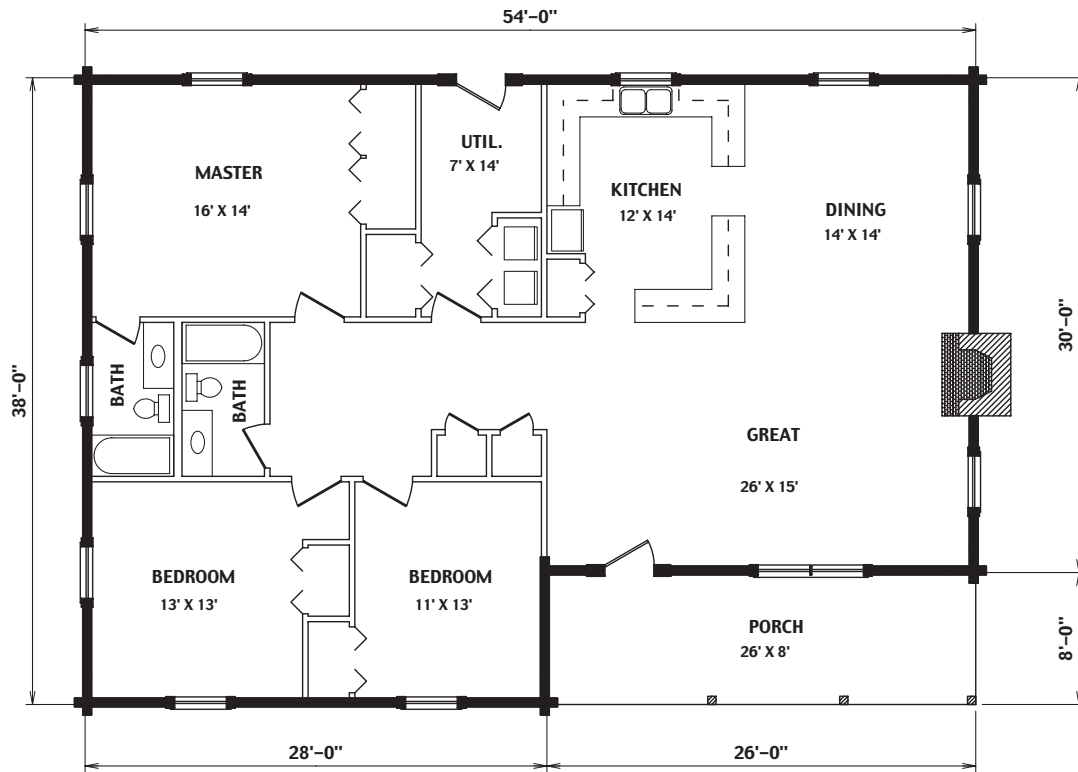
## ***THE HOMESTEAD LOG HOME PACKAGE INCLUDES:***

- **LOG WALL SYSTEM (Borate Pressure Treated)**
  - Pre-cut wall logs
  - 12" lags and saturated foam gasket
  - 1/2" log wall rods with springs
  - Assembly prints
  - Base board trim and log siding for subfloor band boards
- **WINDOW & DOOR FRAMING SYSTEM (Borate Pressure Treated)**
  - Pre-cut, window and door jambs
  - Interior and exterior 1" trim lumber
- **ROOF SYSTEM BY OWNER**
- **PORCH FRAMING SYSTEM (Pressure Treated)**
  - Pre-cut 4" X 8" sills, plates and rafters
  - 6" x 6" foundation and support posts
  - Pre-cut 2" x 8" joists and 5/4" decking
- **TRIM LUMBER (Borate Pressure Treated)**
  - Surfaced trim lumber for gable ends, fascia, and porch eaves
- **OPTIONS:** 2" x 6" T & G for Porch Roof and log siding for gable ends



**THE RIGHT CHOICE.**

*Borate Pressure Treatment*  
**THE UNSEEN INVESTMENT.**



FIRST FLOOR PLAN

# ***THE HOMESTEAD***

- 38' x 50'
- 1692 Square Feet Living Area
- 8' x 26' Covered Porch



*Borate Pressure Treatment*  
**THE UNSEEN INVESTMENT.**

**THE BURKE-PARSONS-BOWLBY CORPORATION**

P.O. Box 609 • Stanton, Kentucky 40380 • (606) 663-2837 • FAX: (606) 663-4136  
 P.O. Box 231 • Ripley, West Virginia 25271 • (304) 372-1243 • FAX: (304) 372-1211