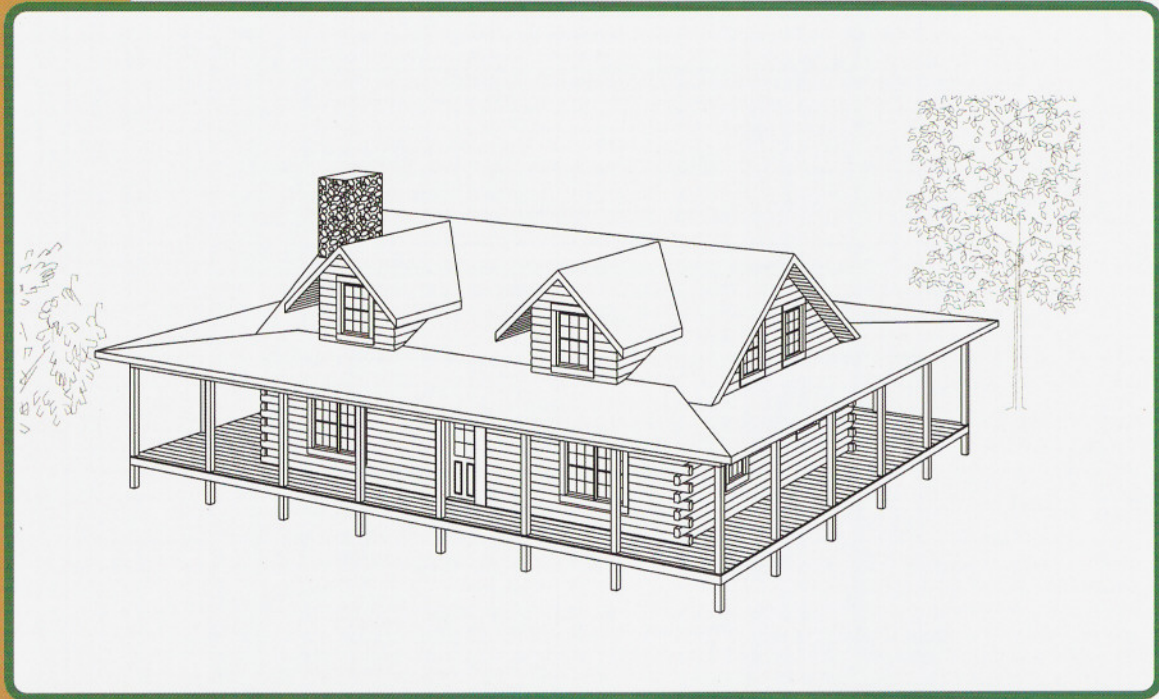


THE

HAMILTON

(LOFT SERIES)



THE HAMILTON LOG HOME PACKAGE

• LOG WALL SYSTEM (Borate Pressure Treated)

- Pre-cut wall logs
- 12" lags and saturated foam gasket
- 1/2" log wall rods with springs
- Assembly prints
- Base board trim and log siding for subfloor band boards

• WINDOW & DOOR FRAMING SYSTEM (Borate Pressure Treated)

- Pre-cut, window and door jambs
- Interior and exterior 1" trim lumber

• LOFT FRAMING SYSTEM (Borate Pressure Treated)

- Pre-cut 4" x 8" loft joists
- Pre-cut 6" x 12" girder beams
- 6" x 6" support posts with adjusters
- Installation hardware

• ROOF FRAMING SYSTEM (Borate Pressure Treated)

- Pre-cut 4" X 8" rafters and ridge beams
- 4" x 8" support posts and 2" x 6" rafter collar ties
- Pre-cut 4" x 8" dormer headers, sills, and support posts

• PORCH FRAMING SYSTEM (Pressure Treated)

- Pre-cut 4" X 8" sills, plates and rafters
- 6" x 6" foundation and support posts
- Pre-cut 2" x 8" joists and 5/4" decking

• TRIM LUMBER (Borate Pressure Treated)

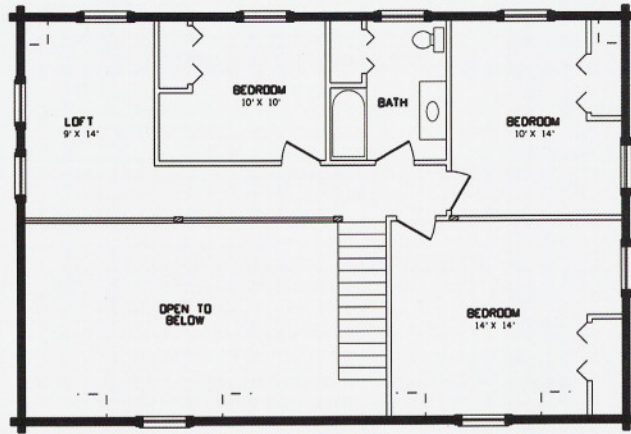
- Surfaced trim lumber for gable ends, dormers, fascia, and porch eaves

- **OPTIONS:** 2" x 6" T & G, Rigid insulation and log siding for gable ends and dormers

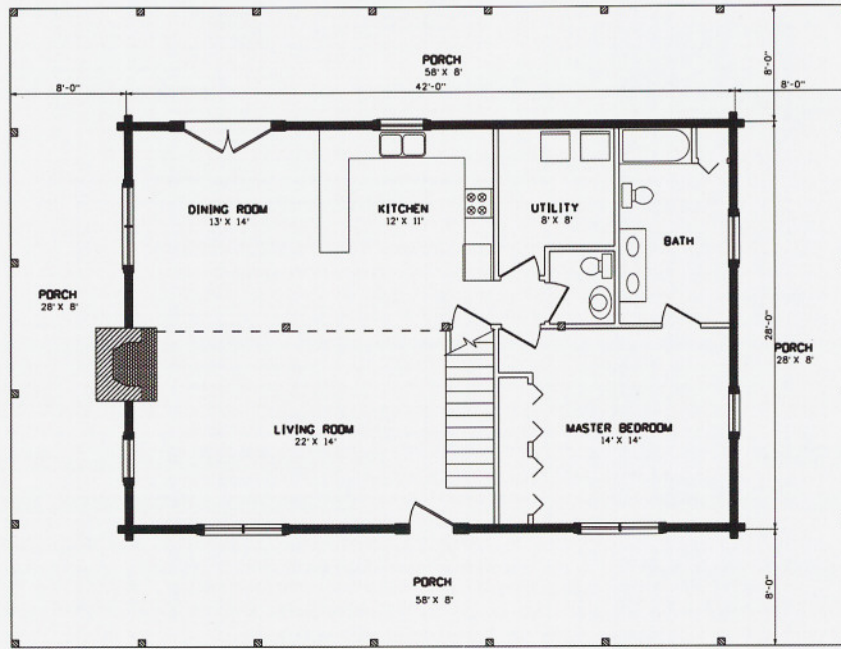


THE RIGHT CHOICE.

Borate Pressure Treatment
THE UNSEEN INVESTMENT.



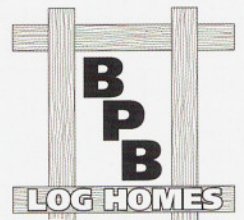
SECOND FLOOR PLAN



FIRST FLOOR PLAN

THE HAMILTON

- 28' x 42'
- 2000 Sq. Ft.
- 1176 Sq. Ft. First Floor
- 826 Sq. Ft. Second Floor
- 8' x 172' Wrap Around Porch



Borate Pressure Treatment
THE UNSEEN INVESTMENT.

THE BURKE-PARSONS-BOWLBY CORPORATION
 PO Box 609 • Stanton, Kentucky 40380 • (606) 663-2837 • FAX: (606) 663-4136
 PO Box 231 • Ripley, West Virginia 25271 • (304) 372-1243 • FAX: (304) 372-1212