

THE

BRIARWOOD

(RANCH SERIES)



THE BRIARWOOD LOG HOME PACKAGE INCLUDES:

- **LOG WALL SYSTEM
(Borate Pressure Treated)**

- Pre-cut wall logs
- 12" lags and saturated foam gasket
- 1/2" log wall rods with springs
- Assembly prints
- Base board trim and log siding for subfloor band boards

- **WINDOW & DOOR FRAMING SYSTEM
(Borate Pressure Treated)**

- Pre-cut, window and door jambs
- Interior and exterior 1" trim lumber

- **ROOF SYSTEM BY OWNER**

- **PORCH FRAMING SYSTEM
(Pressure Treated)**

- Pre-cut 4" X 8" sills, plates and rafters
- 6" x 6" foundation and support posts
- Pre-cut 2" x 8" joists and 5/4" decking

- **TRIM LUMBER
(Borate Pressure Treated)**

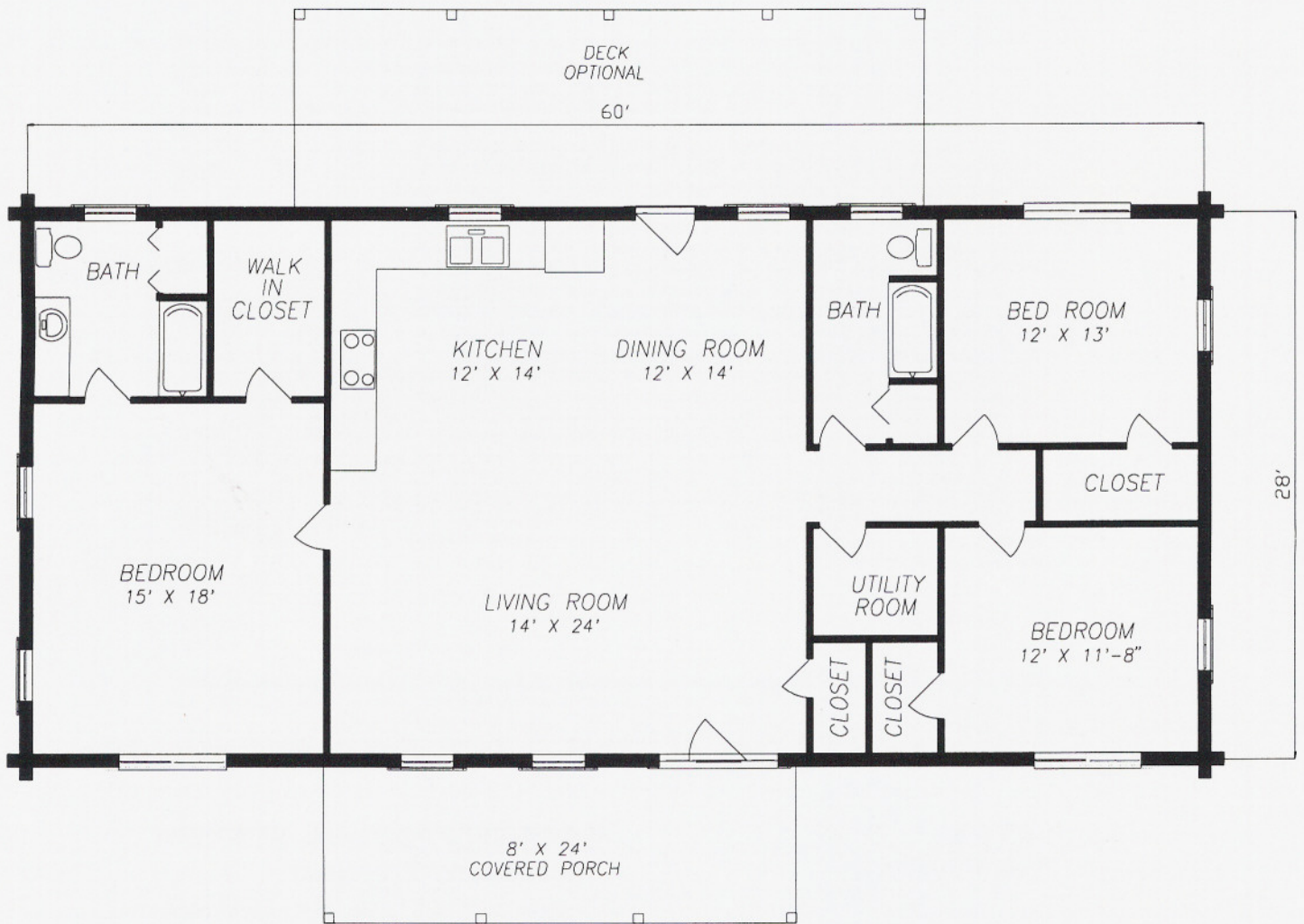
- Surfaced trim lumber for gable ends, fascia, and porch eaves

- **OPTIONS: 2" x 6" T & G for Porch Roof and log siding for gable ends**



THE RIGHT CHOICE.

Borate Pressure Treatment
THE UNSEEN INVESTMENT.



THE BRIARWOOD

- 28' x 60'
- 1680 Square Feet Living Area
- 8' x 24' Covered Porch



THE BURKE-PARSONS-BOWLBY CORPORATION

P.O. Box 609 • Stanton, Kentucky 40380 • (606) 663-2837 • FAX: (606) 663-4136
 P.O. Box 231 • Ripley, West Virginia 25271 • (304) 372-1243 • FAX: (304) 372-1212

Borate Pressure Treatment
THE UNSEEN INVESTMENT.