

THE

BOONESBORO

(RANCH SERIES)



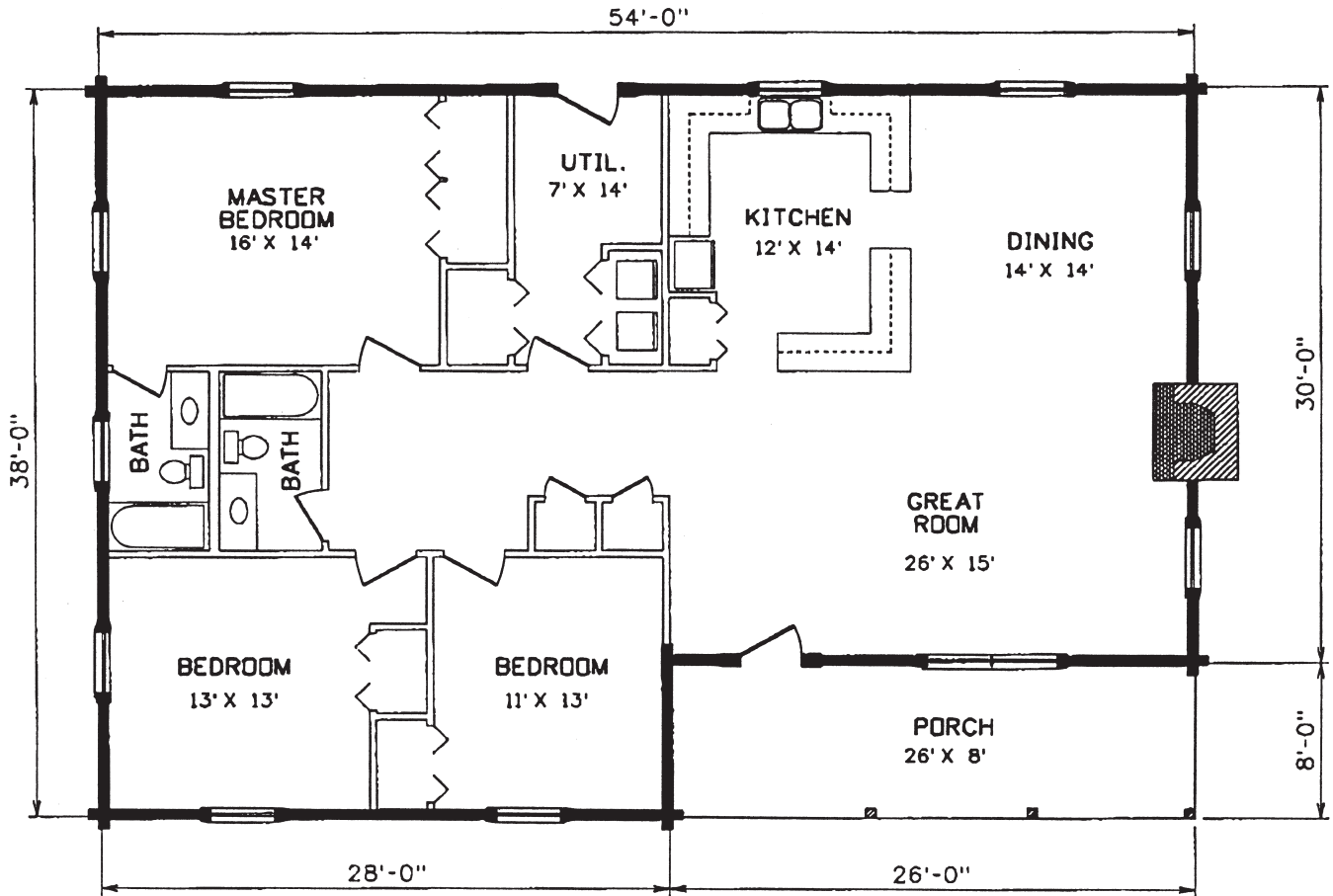
THE BOONESBORO LOG HOME PACKAGE INCLUDES:

- **LOG WALL SYSTEM (Borate Pressure Treated)**
 - Pre-cut wall logs
 - 12" lags and saturated foam gasket
 - 1/2" log wall rods with springs
 - Assembly prints
 - Base board trim and log siding for subfloor band boards
- **WINDOW & DOOR FRAMING SYSTEM (Borate Pressure Treated)**
 - Pre-cut, window and door jambs
 - Interior and exterior 1" trim lumber
- **ROOF SYSTEM BY OWNER**
- **PORCH FRAMING SYSTEM (Pressure Treated)**
 - Pre-cut 4" X 8" sills, plates and rafters
 - 6" x 6" foundation and support posts
 - Pre-cut 2" x 8" joists and 5/4" decking
- **TRIM LUMBER (Borate Pressure Treated)**
 - Surfaced trim lumber for gable ends, fascia, and porch eaves
- **OPTIONS: 2" x 6" T & G for Porch Roof and log siding for gable ends**



THE RIGHT CHOICE.

Borate Pressure Treatment
THE UNSEEN INVESTMENT.



FIRST FLOOR PLAN

THE BOONESBORO

- 38' x 54'
- 1844 Square Feet Living Area
- 8' x 26' Front Porch



Borate Pressure Treatment
THE UNSEEN INVESTMENT.

THE BURKE-PARSONS-BOWLBY CORPORATION

P.O. Box 609 • Stanton, Kentucky 40380 • (606) 663-2837 • FAX: (606) 663-4136
 P.O. Box 231 • Ripley, West Virginia 25271 • (304) 372-1243 • FAX: (304) 372-1211